

# - ABRI VOITURE -

GASPARD RANGLARET & PALOMA EXERTIER

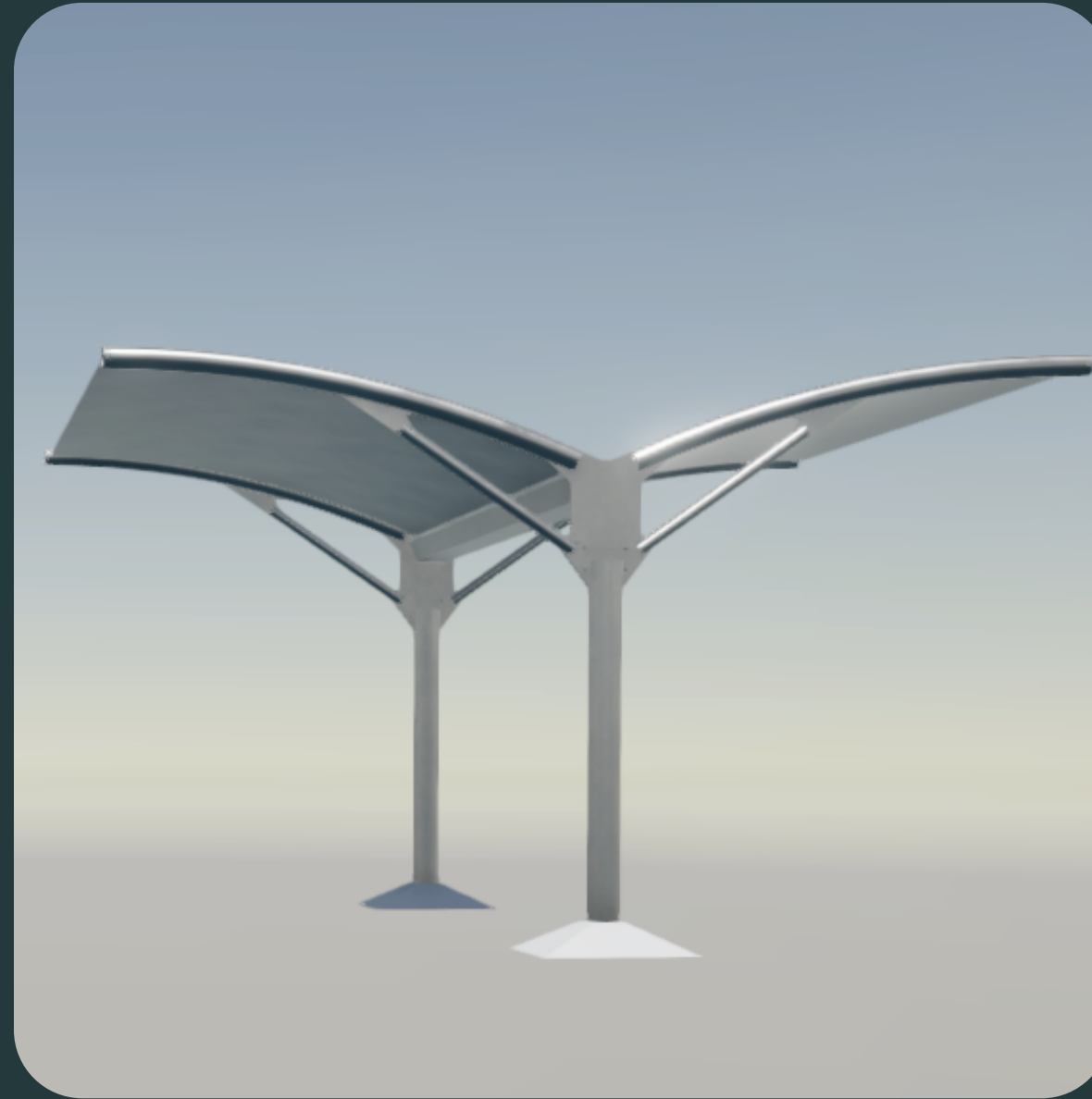




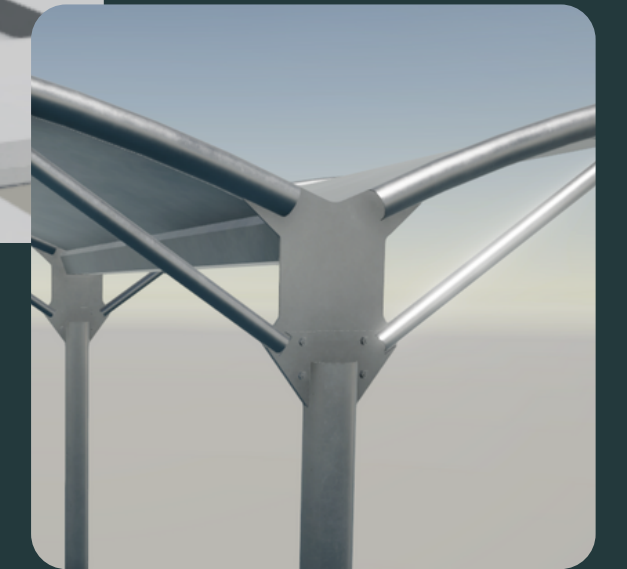
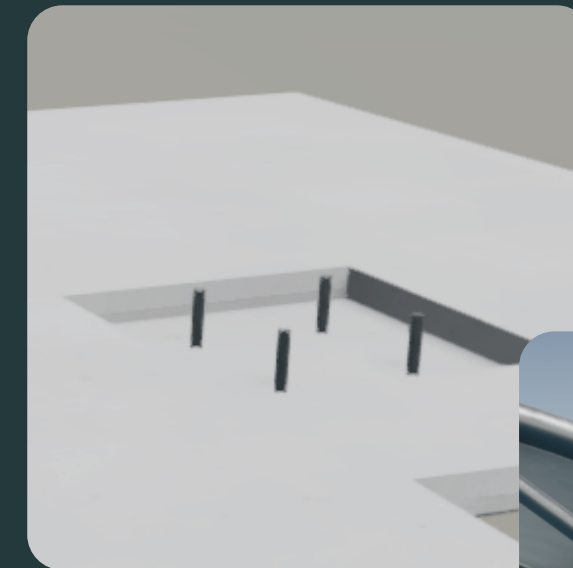
# SOMMAIRE

- 1- Présentation du projet
  - 2- Choix architecturaux
    - 3- Solutions techniques
      - 4- Devis



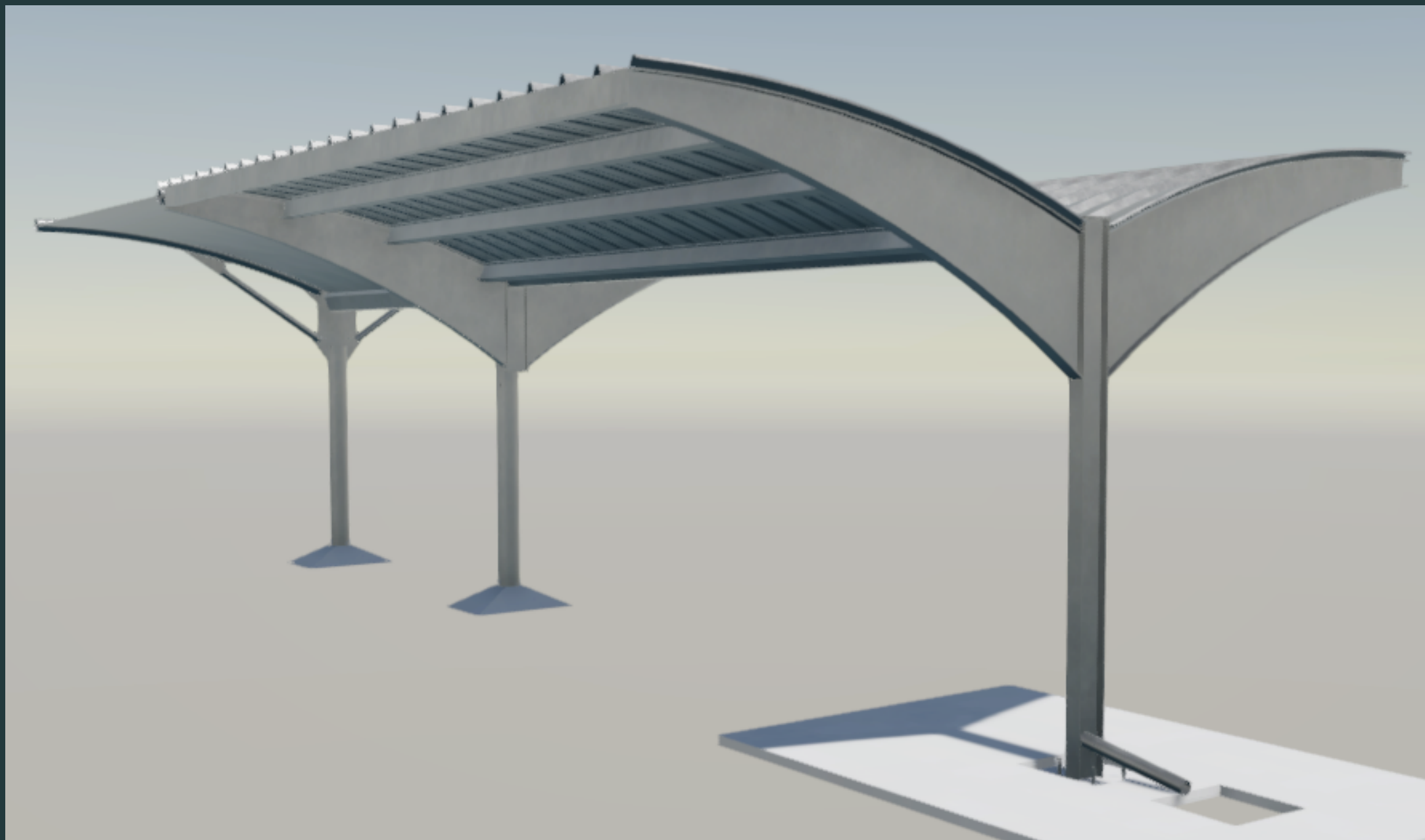
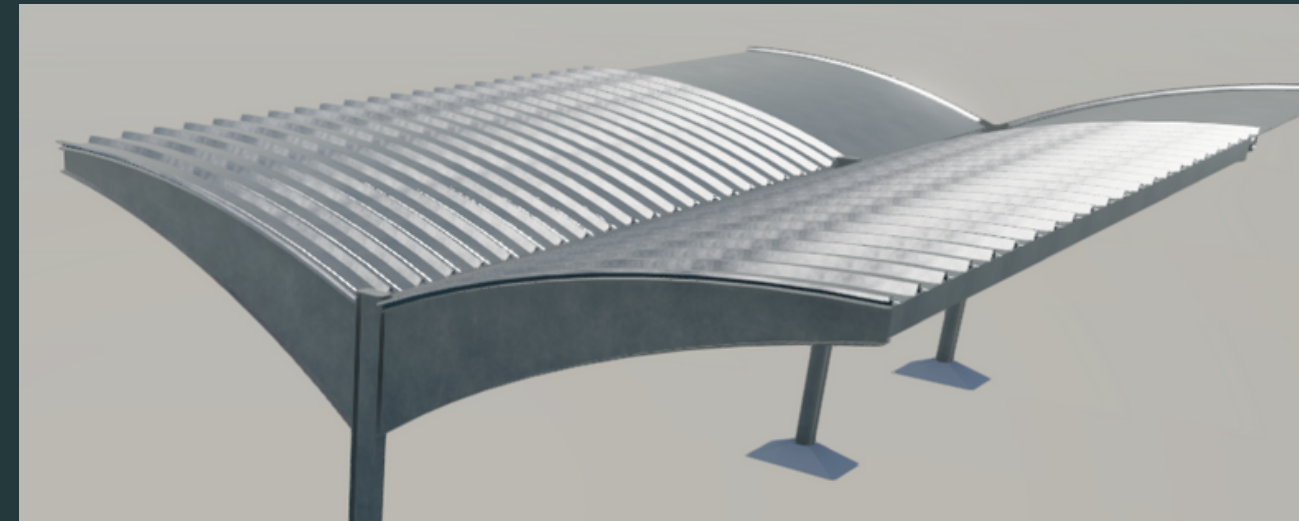


# 1-Présentation du projet





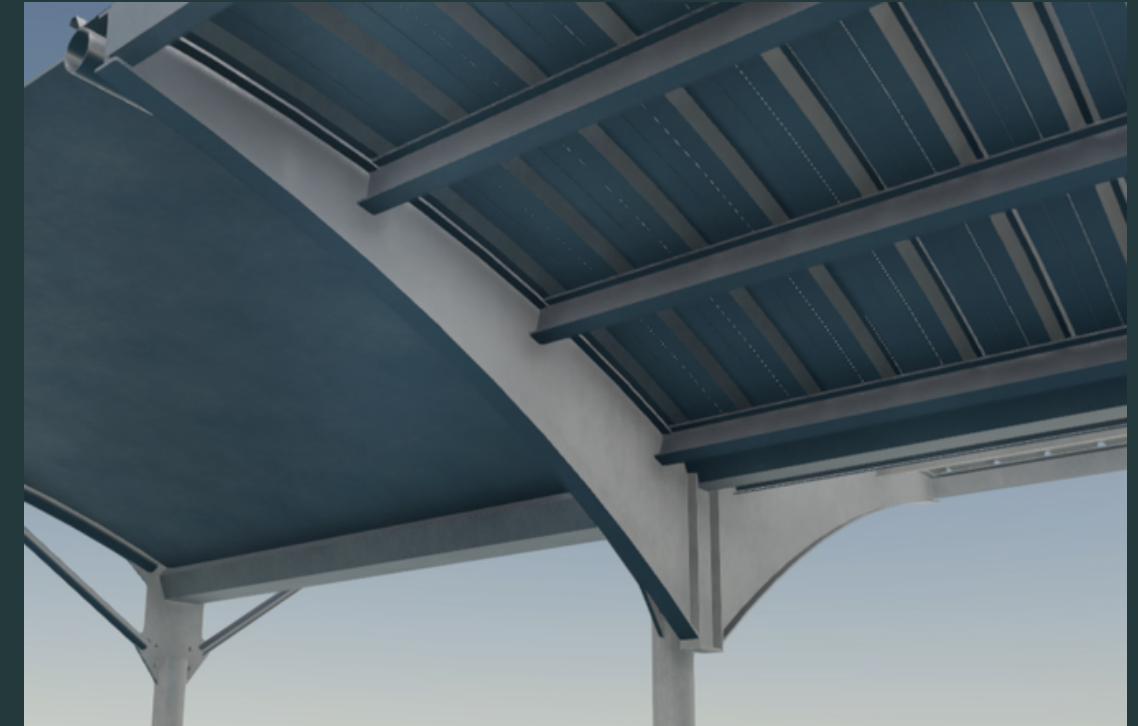
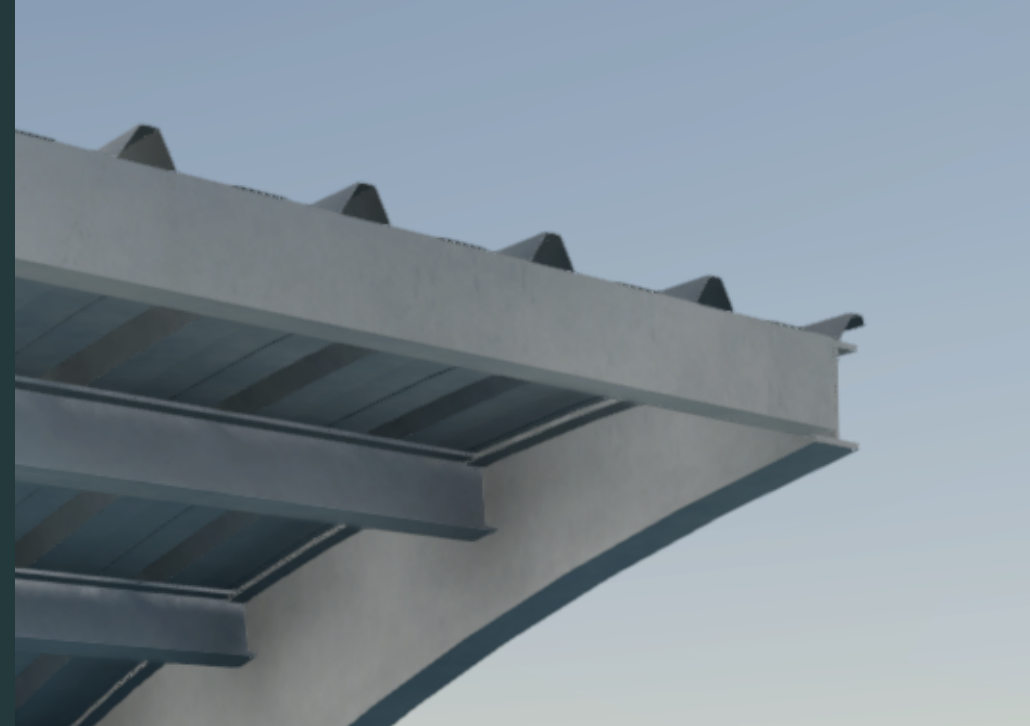
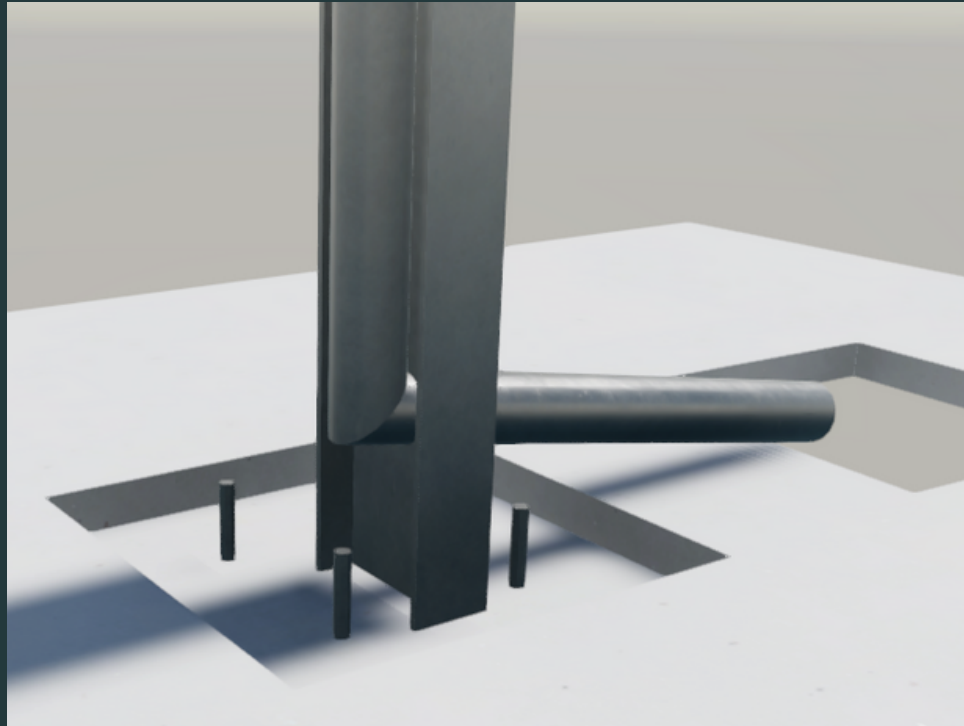
# 2- Choix architecturaux



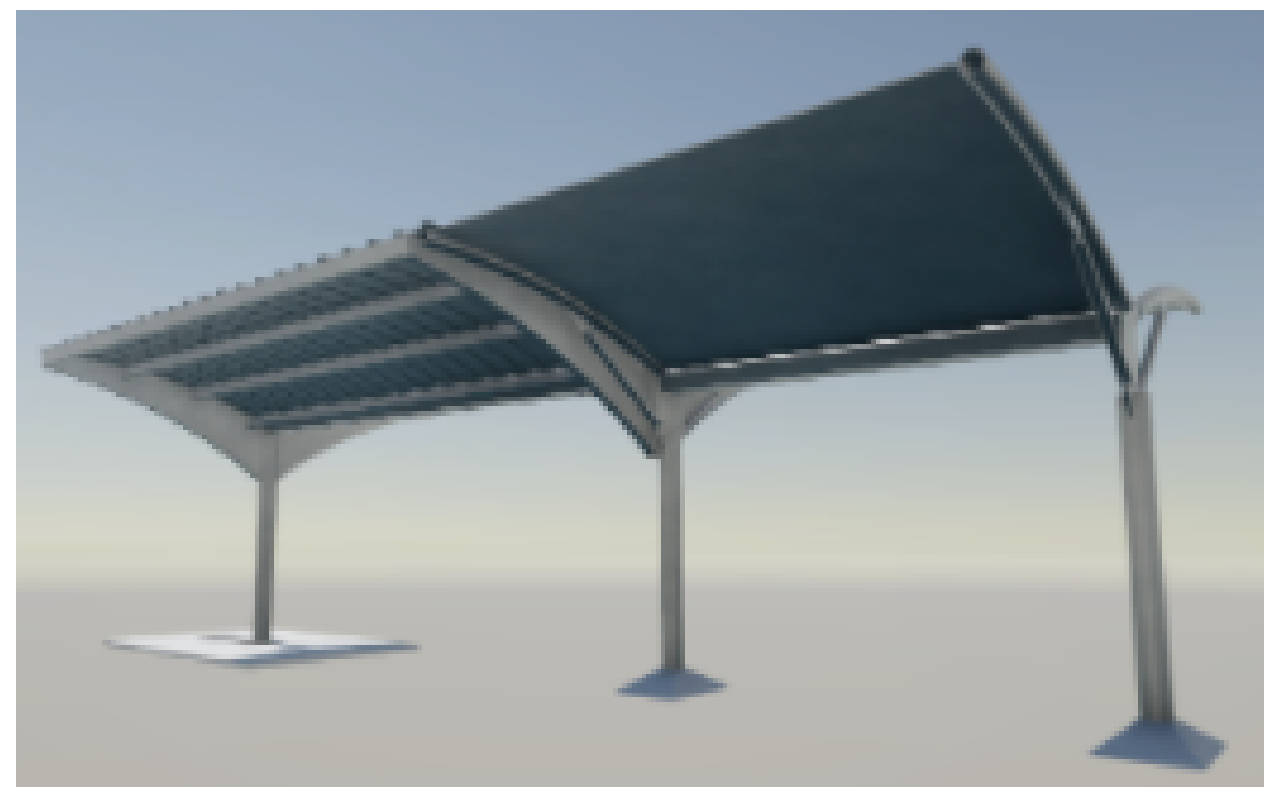




# 3- Solutions techniques



# DEVIS



Désignation	Quantité unitaire	Prix unitaire	Montant HT
1. Structure	1 ensemble	1825,8 €/ens	1 825,80 €
2. Peinture (2 couches)	37,5 m <sup>2</sup>	22 €/m <sup>2</sup>	825,00 €
3. Couverture	35 m <sup>2</sup>	35 €/m <sup>2</sup>	1 225,00 €
TOTAL HT			3 875,80 €
TVA			775,16 €
MONTANT TTC			4 650,96 €



## 4- Devis